



Course and Service Portfolio

Specialized IT courses for IT professional and organizations willing to take benefit from the competitive advantages provided by international certifications



Cyber & IT Governance

- CISO ● CyberSecurity Manager ● Security Director
- CIO ● IT Manager



CISSP - Certified Information Systems Security Professional



CISSO - Certified Information Systems Security Officer
CSLO - Certified Security Leadership Officer



CISM - Certified Information Security Manager
CGEIT - Certified in the Governance of Enterprise IT



CISSO - Certified Information Systems Security Officer

EC-Council



CyberSecurity 4 CXO

certSIGN
BY UTI

Penetration Testing, Vulnerability Assessment

- Penetration Tester ● Vulnerability Assessor ● Ethical Hacker ● Cyberspace Engineer



EC-Council

ECSA v9 - EC Council Certified Security Analyst v9
CEH v9 - Certified Ethical Hacker v9



CVA - Certified Vulnerability Assessor
CPTe - Certified Penetration Testing Engineer
CPEH - Certified Professional Ethical Hacker
CPTC - Certified Penetration Testing Consultant

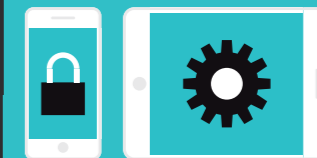
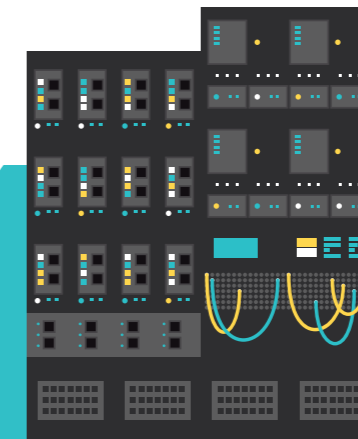


GIAC - GPEN (Penetration Tester) Bootcamp



certSIGN
BY UTI

Using Metasploit



Security Audit

- CIO ● CISO ● Security Officer ● Compliance Officer ● IT Auditor ● IT Project Manager



CISA - Certified Information Systems Auditor



ISO 27001:2013 - Lead Auditor (LA)

Data Forensics and Incident Response

- Security Analyst/Engineer
- SOC Analyst
- Cyber Threat Analyst
- CERT Member
- Malware Analyst
- Computer Crime Investigator



CSS - Certified Security Sentinel
 CIHE - Certified Incident Handling Engineer
 CDFE - Certified Digital Forensics Examiner
 CNFE - Certified Network Forensics Engineer



EC-Council

CHFI v9 - Certified Hacking Forensic Investigator v9
 ECIH - EC Council Certified Incident Handler



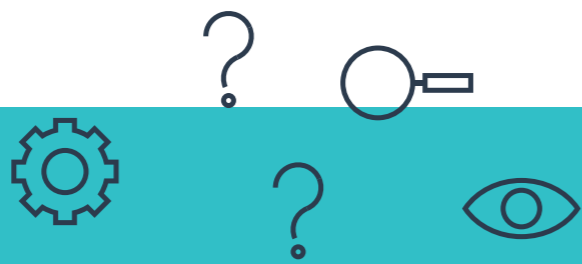
International Standard
 for Information Security

CCFP - Certified Cyber Forensic Investigator



certSIGN
 BY UTI

DFIR - Data Forensics & Incident Response



Disaster Recovery

- Network Server Administrator
- Firewall Administrator
- Systems Administrator
- Application Developer
- CIO
- CISO



CDRE - Certified Disaster Recovery Engineer



EC-Council

EDRP - EC Council Disaster Recovery Professional

Security Administration

- System/IT Administrator
- Security Administrator
- Security Architect/Engineer



Serving IT Governance Professionals

CRISC - Certified in Risk and Information Systems Control



International Standard
 for Information Security

SSCP - Systems Security Certified Practitioner



EC-Council

ENSA - EC Council Network Security Administrator
 ECSS - EC Council Certified Security Specialist



Security+

Applications / Programming / Encryption

● Developer ● Software Architect ● QA Tester ● Development Manager



ECSP - EC Council Certified Secure Programmer
ECES - EC Council Certified Encryption Specialist



CSCE - Certified Secure Code Engineer
CSWAE - Certified Secure Web Application Engineer



CAP - Certified Authorization Professional
CSSLP - Certified Secure Software Lifecycle Professional



Secure Programming in C++ and Java
PKI & Cryptography Training

Malware Analysis

● Information Security Staff ● Forensic Investigators



Mandiant - Introduction to Malware Analysis
Mandiant - Intermediate Malware Analysis
Mandiant - Advanced Malware Analysis



Networking Security

● IT Manager ● IT Administrator ● Network Engineer ● Computer User



CSCU - Certified Secure Computer User



CWSE - Certified Wireless Security Engineer



IINS - Implementing Cisco IOS Network Security
 SISAS - Implementing Cisco Secure Access Solutions
 SENSS - Implementing Cisco Edge Network Security Solutions
 SIMOS - Implementing Cisco Secure Mobility Solutions
 SITCS - Implementing Cisco Threat Control Solutions
 SCYBER - Securing Cisco Networks with Threat Detection and Analysis



FCNSA - Fortinet Certified Network Security Administrator
 FCNSP - Fortinet Certified Network Security Professional



Administering BIG-IP v11
 Configuring BIG-IP LTM v11: Local Traffic Manager
 Troubleshooting BIG-IP LTM v11
 Configuring BIG-IP ASM v11: Application Security Manager
 Configuring BIG-IP APM v11: Access Policy Manager
 Configuring BIG-IP GTM v11: Global Traffic Manager
 Configuring BIG-IP AAM v11: Application Acceleration Manager
 Configuring BIG-IP AFM v11: Advanced Firewall Manager

Holistic Cyber Security



CyberSAFE - Securing Assets For End-users (CyberSecurity Awareness)
 CFR - CyberSec First Responder: Threat Detection & Response



Please contact us at it-training@certsign.ro for a personalized offer and further details regarding our training programs.



Windows Server 2008

- 6418 - Deploying Windows Server 2008
- 6419 - Configuring, Managing and Maintaining Windows Server 2008-based Servers
- 6421 - Configuring and Troubleshooting a Windows Server 2008 Network Infrastructure
- 6425 - Configuring and Troubleshooting Windows Server 2008 Active Directory Domain Services
- 6426 - Configuring and Troubleshooting Identity and Access Solutions with Windows Server 2008 Active Directory
- 6433 - Planning and Implementing Windows Server 2008
- 6435 - Designing Windows Server 2008 Network and Applications Infrastructure
- 6436 - Designing Windows Server 2008 Active Directory Infrastructure and Services

Windows Server 2012

- 20410 - Installing and Configuring Windows Server 2012
- 20411 - Administering Windows Server 2012
- 20412 - Configuring Advanced Windows Server 2012 Services
- 20413 - Designing and Implementing a Server Infrastructure
- 20414 - Implementing an Advanced Server Infrastructure

Windows 7

- 6292 - Installing and Configuring Windows 7 Client
- 6293 - Troubleshooting and Supporting Windows 7 in the Enterprise
- 6294 - Planning and Managing Windows 7 Desktop Deployments and Environments

Windows 8

- 20687 - Configuring Windows 8.1
- 20688 - Supporting Windows 8.1

Microsoft Exchange Server 2010

- 10135 - Configuring, Managing and Troubleshooting Microsoft Exchange Server 2010 Service Pack 2
- 10233 - Designing and Deploying Messaging Solutions with Microsoft Exchange Server 2010 Service Pack 2

Microsoft Exchange Server 2013

- 20341 - Core Solutions of Microsoft Exchange Server 2013
- 20342 - Advanced Solutions of Microsoft Exchange Server 2013

Boost your professional abilities by specialized training and development sessions!

